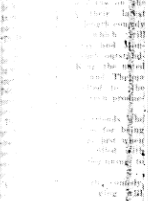


### Laurel and Hardy in Screen Feature Sunday - Monday

"Humor in Vienna." Theater Guild Production. Billed for Next Week

It is the story of a young man who goes to Vienna to see his father, who is a doctor. He meets a girl who is in love with him, and they get married. The father is a very strict man, and the son is a very free man. The father is a very strict man, and the son is a very free man.

Graters and Peas  
The grater is not the same as the grater. The grater is not the same as the grater.



### "Ask Yourself These Questions"

- Without a telephone what would I do—
  - If the house or barn caught fire?
  - If one of the family became dangerously ill?
  - If thieves visited the farm?
  - If I wanted immediate market information?
- When you have a telephone the answer to these questions is simple. Day and night the telephone is ready to bring help when you need it or information when you want it. Often one call is worth a year's cost.



But a fan soon stirs up a good breeze in this comfort is cheap. It costs a 10-inch fan in the average home of Northern Illinois.

are now less than \$2.50 at ALL ELECTRICAL DEALERS.

### Jewel Tea Sales Total \$802,143.06 for Four Weeks Ending June 17

The Jewel Tea Co., Inc. reports that its sales for the four weeks ending June 17, 1933, were \$802,143.06 as compared with \$881,112.62 for the same period in 1932, a decrease of 8.88 per cent. The average number of sales outlets for parallel weeks in 1933 was 1347 and in 1932, 1336.

Sales for the first 24 weeks of 1933 were \$4,900,550.62 as compared with \$5,282,000.94 for a like period in 1932, a decrease of 5.08 per cent. For these weeks the average number of outlets in 1933 was 1344 and in 1932, 1336.

Sales of the 87 stores of Jewel Food Stores, Inc., a subsidiary of the Jewel Tea Co., Inc., for the 4 weeks ending June 17, 1933, were \$29,500,311. Sales of the Jewel Food Stores, Inc. for the 24 weeks ending June 17, 1933, with an average of 90 stores were \$1,788,448.71.

### Jefferson as Seen by Contemporary in 1807

There are a number of pen portraits of Thomas Jefferson. Here is one drawn by Judge Joseph Story, in May, 1807, when Jefferson was half way through his second term as president of the United States.

"Jefferson is tall and thin, of a sallow complexion, with a fine, intelligent eye. He conversed in a very easy, correct, and pleasant style. His language is peculiarly unpretentious, and his manner very unassuming. The negligence of his address a little surprised me. He received us in his slippers, and wore old-fashioned clothes, which were not in the latest order, or of the most elegant kind; a blue coat, white worked cravat, waistcoat and corduroy breeches (small clothes) constituted his dress.

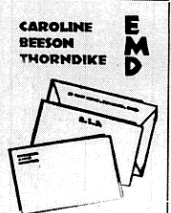
"The President is a little awkward in his first address, but you are immediately at ease in his private conversation. His manners are inviting and not uncourteous; and his voice flexible and distinct. He bears the marks of intense thought and perseverance in his countenance."

ADVERTISEMENT  
PUBLIC NOTICE is hereby given by PUBLIC SERVICE COMPANY OF NORTHERN ILLINOIS that the filing with the Illinois Commerce Commission on June 12, 1933, to become effective July 1, 1933, of Schedule G-5 (Gas) covering and superseding Schedule G-5 (Gas) and containing revisions and reductions of rates and the inauguration of two new gas rates, to wit, Rate 12 - Large Industrial Gas Service, for the processing of brack, the and utility of the product of Rate 12 - Gas Service for Bakeries. Copies of said rate Schedules are on file in the offices of the Commission and of the Company.

PUBLIC SERVICE COMPANY OF NORTHERN ILLINOIS  
By JOHN G. LEARNED,  
Vice-President

### May and June Record Wet and Dry Months

The rainfall in Illinois during the month of May was almost eight inches, exceeding any previous May on record. This is about twice the normal rainfall for the state on the other hand, June was unusual, arid with less than two inches of precipitation.



Extremely Smart And An Unusually Rare Value

### RYTEK OLD WOOD BLOCK STYLE NOTE SHEETS

A sad case of unanswered letters and your supply of alibi exhausted? Then turn your letter writing into a thrilling event. Here are swanky note sheets, for those short hurried letters, as gay as a summer vacation! With your name or monogram on the sheets in clever Wood Block lettering. One line block lettering. One line address on envelopes.

High quality Yellow in pastel colors—Green, Orchid, Blue, Ivory, Tan or White, Green, Brown, Blue or Red Ink.

75 Note Sheets and 50 Envelopes  
**\$1** BOX

With Lettering on Sheets and Envelopes

One—there's the folded sheet in the same style of lettering and colors as above. 50 Sheets and 50 Envelopes with lettering on Sheets and Envelopes \$1 box.

Barrington Review  
Tel., Barrington 1

# Something Worth Thinking .. About ..

Sharp advances in the cost of many of the paper stocks and the certain increase in cost of other lines make it advisable for our customers to anticipate their printing needs ...

The paper jobbers tell us that the advance is directly caused by President Roosevelt's program of increased salaries and the influence he is exerting upon the producers of raw materials in many lines aside from paper products.

This firm is not adverse to increased salaries for the working man, but in view of the resulting higher paper costs, a rise in prices for commercial printing will inevitably follow. We earnestly advise you to anticipate your needs for printed supplies and place your order now in advance of the price climb.

BARRINGTON REVIEW  
Telephone, Barrington 1

## BEST GOODYEAR EVER MADE

*buy before prices go up again*

The new Goodyear Pathfinder has been given FULL CENTER TRACTION . . . 20 per cent thicker non-skid tread . . . stouter Supertwist Cord body . . . more mileage, more satisfaction . . . actually more quality than you get in many top-priced tires of other makes . . . In every way a better tire than the famous old Pathfinder it succeeds . . . The Goodyear All-Weather, the world's standard of value. Now better in quality—better in safety—better in mileage than in all its distinguished history . . . Pathfinder or All-Weather? That's for your pocket-book to decide. You can't go wrong. Get a full set now—with Goodyear quality tubes—before prices go up again.

<p><b>GOODYEAR Pathfinder</b></p> <p>1.40-21 <b>\$500</b></p> <p>1.50-21 <b>\$560</b></p> <p>1.60-21 <b>\$605</b></p> <p>1.80-19 <b>\$655</b></p> <p><small>Other sizes priced in proportion. All Full Oversize.</small></p>	<p><b>GOODYEAR All-Weather</b></p> <p>4.40-21 <b>\$640</b></p> <p>4.50-21 <b>\$710</b></p> <p>4.75-19 <b>\$760</b></p> <p>5.00-19 <b>\$815</b></p> <p><small>Other sizes priced in proportion. All Full Oversize.</small></p>
--	---

# GOODYEAR

More people ride on Goodyear Tires than on any other kind

**J. S. GIESKE TIRE SHOP**

110 N. Cook St. Phone 382-J Barrington, Ill.