

Wedding Anniversary... The old custom of presenting a wife with a silver watch when she had lived with her husband 25 years...

The Skin Surface... The skin surface of human beings and animals does not increase in percentage with their weight...



plement Paid its Own Way... brings knowledge of markets and prices, and in a year's time the EXTRA profits and savings that are made because of it should more than pay for telephone service...

Business Office, or any telephone employee will gladly help you place your order.

fers

S prices

ELECTOR LAMP SPECIAL... indirect type floor lamp, special 30-watt bulb for extra light. Attractive metal work. Pure silk shade. Bargain at only \$14.95

MPANY... on

"It's a Gift" and "Peck's Bad Boy" Here Next Week

"Anne of Green Gables," a Girl Scout Benefit, Jan. 16, 17, 18.

Harry LeRoy and W. C. Fields team up as a delightful comedy pair in "It's a Gift," show at the Casino theatre Saturday night...

Jackie Cooper, the brilliant and appealing youngest of the film stars, returns to the screen Sunday and Monday in the title role of "Peck's Bad Boy"...

Lowly Wermis Furnishes Rich Ermine of Royalty... It is the lowly weasel that furnishes the ermine of royalty and is a member of the rodent family...

Palatine... Installation... The Palatine lodge held its installation of officers last evening in the I.O.O.F. hall...

P.F.A. Meets... The Parent-Teacher association held its regular meeting Tuesday evening in "Dads' Night"...

Company... The company reported doing about \$40 worth of welfare work at Christmas time...

Company... Mrs. Louise Danielson returned here from the Community hospital Wednesday and is doing nicely...

Company... Mrs. Minnie Barnson served as musician and Miss Sophie Wil-

Church News

METHODIST EPISCOPAL... 9:30 a. m. Sunday school N. O. PLAGGE, superintendent. 10:40 a. m. Morning worship. REV. H. L. EAGLE, Pastor

ST. ANNE... Sunday, Low Mass, 8 a. m. and 10 a. m. Week day, Low Mass, 7 a. m. Devotions in honor of the Sacred Heart, first Friday of each month. Mass at 6 a. m.

ST. JAMES'... Holy Communion at 8 a. m. Church school, 9:30 a. m. Choral Eucharist at 11 a. m. A. E. TAYLOR, Rector

SOUTH CHURCH (Sutton Bible Church) Penny road between Bartlett road and Sutton road. 8:30 p. m. Bible school. Classes for all ages.

7 p. m. Young people's meeting. Mr. Robker and Jefferson Park will present the Bible in stereoscopic pictures, continuing every second Sunday of the month.

FIRST CHURCH OF CHRIST SCIENTIST... 421 E. Main Street. 9:30 a. m., Sunday service. 10:45 a. m., Sunday school.

FIRST BAPTIST... 9:30 a. m., Bible school. 10:15 a. m., Morning worship. 6:45 p. m., Young people.

ST. PAUL EVANGELICAL... 9:30 a. m., Bible school. 10:15 a. m., Morning worship in English. Installation of officers and new members of the church council.

ST. MARY'S... 9:30 a. m., Bible school. 10:15 a. m., Morning worship. 6:45 p. m., Young people.

ST. MARY'S... 9:30 a. m., Bible school. 10:15 a. m., Morning worship. 6:45 p. m., Young people.

ST. MARY'S... 9:30 a. m., Bible school. 10:15 a. m., Morning worship. 6:45 p. m., Young people.

ST. MARY'S... 9:30 a. m., Bible school. 10:15 a. m., Morning worship. 6:45 p. m., Young people.

ST. MARY'S... 9:30 a. m., Bible school. 10:15 a. m., Morning worship. 6:45 p. m., Young people.

ST. MARY'S... 9:30 a. m., Bible school. 10:15 a. m., Morning worship. 6:45 p. m., Young people.

ST. MARY'S... 9:30 a. m., Bible school. 10:15 a. m., Morning worship. 6:45 p. m., Young people.

ST. MARY'S... 9:30 a. m., Bible school. 10:15 a. m., Morning worship. 6:45 p. m., Young people.

ST. MARY'S... 9:30 a. m., Bible school. 10:15 a. m., Morning worship. 6:45 p. m., Young people.

ST. MARY'S... 9:30 a. m., Bible school. 10:15 a. m., Morning worship. 6:45 p. m., Young people.

ST. MARY'S... 9:30 a. m., Bible school. 10:15 a. m., Morning worship. 6:45 p. m., Young people.

ST. MARY'S... 9:30 a. m., Bible school. 10:15 a. m., Morning worship. 6:45 p. m., Young people.

ST. MARY'S... 9:30 a. m., Bible school. 10:15 a. m., Morning worship. 6:45 p. m., Young people.

will be held the second Sunday of each month in the English language. REV. A. T. KRETZMANN, Pastor

Robb Hood, the chitinous outlaw and robber of medieval England, the best and most complete portrait of whom is that which was painted by Sir Walter Scott in Ivanhoe, where he appears under the name Lockley, is the central figure of so many ballads among English-speaking peoples that it is difficult to picture him as one other than a character of real life, writes G. B. Turner in the Kansas City Times.

SALEM EVANGELICAL... 9:30 a. m. Sunday school. E. W. PLAGGE and Donald Lander, superintendents. Classes for all ages.

10:30 a. m. Divine worship. Sermon: "Our obligation to God." 7:30 p. m. Evening devotion and beginning of revival meeting. Grace Church choir of Naperville will sing. Rev. H. T. Siemsen of Highland Park will preach.

ST. MATTHEW EV. LUTHERAN (Missouri Synod) Cor. Coolidge Ave. and Hill Street. 9:30 a. m. Graded Sunday school and Adult Bible class. 10:30 a. m. Morning worship. Installation of newly elected officers.

8:00 p. m. Monthly Sunday evening service. These services

Bead-Making in Venice... In the sixteenth century Venice was the bead-making center of the world. Twenty-four furnaces were operated, employing nearly 1,000 workers.

Growth of Bananas... While bananas are small they point outward but as they develop they bend upward and in toward the stem, assuming a vertical position as near as possible.

Queen Victoria Never Characterized... Queen Victoria, who from 1837 to 1901 ruled Great Britain and Ireland in the longest reign in English history, has never been characterized on the British stage, in deference to the wishes of the royal family.

Many Uses for Old Bones... The millions of bones that are thrown away every year help to make a flourishing industry. Their by-products and uses are practically endless, and there is no waste.

Loan Company Stock Paying Dividends... Start a regular savings account on a monthly basis in any amount convenient to you. Your stock is guaranteed 100 per cent up to \$4,000 by United States Insurance.

Start a regular savings account on a monthly basis in any amount convenient to you. Your stock is guaranteed 100 per cent up to \$4,000 by United States Insurance.

Start a regular savings account on a monthly basis in any amount convenient to you. Your stock is guaranteed 100 per cent up to \$4,000 by United States Insurance.

Start a regular savings account on a monthly basis in any amount convenient to you. Your stock is guaranteed 100 per cent up to \$4,000 by United States Insurance.

Start a regular savings account on a monthly basis in any amount convenient to you. Your stock is guaranteed 100 per cent up to \$4,000 by United States Insurance.

Start a regular savings account on a monthly basis in any amount convenient to you. Your stock is guaranteed 100 per cent up to \$4,000 by United States Insurance.

Start a regular savings account on a monthly basis in any amount convenient to you. Your stock is guaranteed 100 per cent up to \$4,000 by United States Insurance.

Start a regular savings account on a monthly basis in any amount convenient to you. Your stock is guaranteed 100 per cent up to \$4,000 by United States Insurance.

Start a regular savings account on a monthly basis in any amount convenient to you. Your stock is guaranteed 100 per cent up to \$4,000 by United States Insurance.

Start a regular savings account on a monthly basis in any amount convenient to you. Your stock is guaranteed 100 per cent up to \$4,000 by United States Insurance.

Start a regular savings account on a monthly basis in any amount convenient to you. Your stock is guaranteed 100 per cent up to \$4,000 by United States Insurance.

Start a regular savings account on a monthly basis in any amount convenient to you. Your stock is guaranteed 100 per cent up to \$4,000 by United States Insurance.

will be held the second Sunday of each month in the English language. REV. A. T. KRETZMANN, Pastor

Robb Hood, the chitinous outlaw and robber of medieval England, the best and most complete portrait of whom is that which was painted by Sir Walter Scott in Ivanhoe, where he appears under the name Lockley, is the central figure of so many ballads among English-speaking peoples that it is difficult to picture him as one other than a character of real life, writes G. B. Turner in the Kansas City Times.

SALEM EVANGELICAL... 9:30 a. m. Sunday school. E. W. PLAGGE and Donald Lander, superintendents. Classes for all ages.

10:30 a. m. Divine worship. Sermon: "Our obligation to God." 7:30 p. m. Evening devotion and beginning of revival meeting. Grace Church choir of Naperville will sing. Rev. H. T. Siemsen of Highland Park will preach.

ST. MATTHEW EV. LUTHERAN (Missouri Synod) Cor. Coolidge Ave. and Hill Street. 9:30 a. m. Graded Sunday school and Adult Bible class. 10:30 a. m. Morning worship. Installation of newly elected officers.

8:00 p. m. Monthly Sunday evening service. These services

Bead-Making in Venice... In the sixteenth century Venice was the bead-making center of the world. Twenty-four furnaces were operated, employing nearly 1,000 workers.

Growth of Bananas... While bananas are small they point outward but as they develop they bend upward and in toward the stem, assuming a vertical position as near as possible.

Queen Victoria Never Characterized... Queen Victoria, who from 1837 to 1901 ruled Great Britain and Ireland in the longest reign in English history, has never been characterized on the British stage, in deference to the wishes of the royal family.

Many Uses for Old Bones... The millions of bones that are thrown away every year help to make a flourishing industry. Their by-products and uses are practically endless, and there is no waste.

Loan Company Stock Paying Dividends... Start a regular savings account on a monthly basis in any amount convenient to you. Your stock is guaranteed 100 per cent up to \$4,000 by United States Insurance.

Start a regular savings account on a monthly basis in any amount convenient to you. Your stock is guaranteed 100 per cent up to \$4,000 by United States Insurance.

Start a regular savings account on a monthly basis in any amount convenient to you. Your stock is guaranteed 100 per cent up to \$4,000 by United States Insurance.

Start a regular savings account on a monthly basis in any amount convenient to you. Your stock is guaranteed 100 per cent up to \$4,000 by United States Insurance.

Start a regular savings account on a monthly basis in any amount convenient to you. Your stock is guaranteed 100 per cent up to \$4,000 by United States Insurance.

Start a regular savings account on a monthly basis in any amount convenient to you. Your stock is guaranteed 100 per cent up to \$4,000 by United States Insurance.

Start a regular savings account on a monthly basis in any amount convenient to you. Your stock is guaranteed 100 per cent up to \$4,000 by United States Insurance.

Start a regular savings account on a monthly basis in any amount convenient to you. Your stock is guaranteed 100 per cent up to \$4,000 by United States Insurance.

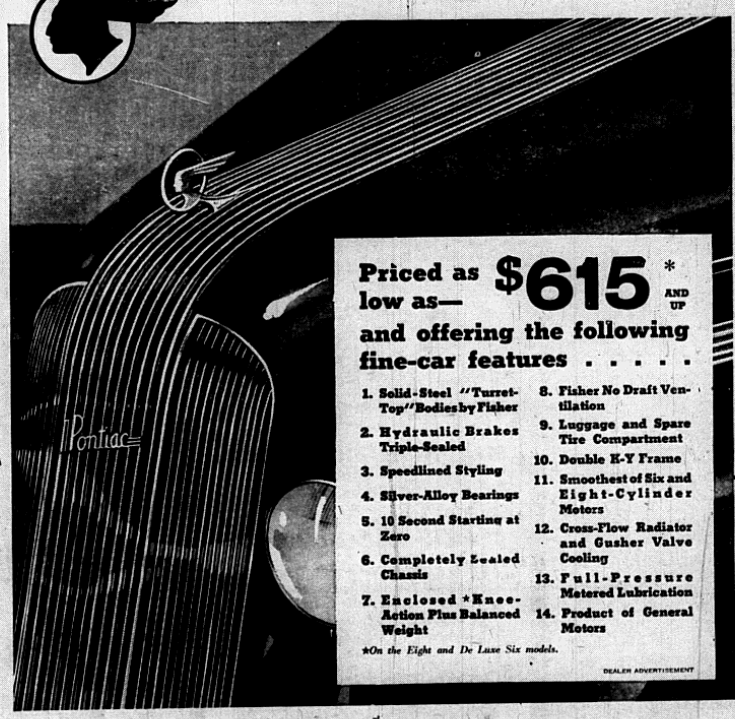
Start a regular savings account on a monthly basis in any amount convenient to you. Your stock is guaranteed 100 per cent up to \$4,000 by United States Insurance.

Start a regular savings account on a monthly basis in any amount convenient to you. Your stock is guaranteed 100 per cent up to \$4,000 by United States Insurance.

Start a regular savings account on a monthly basis in any amount convenient to you. Your stock is guaranteed 100 per cent up to \$4,000 by United States Insurance.

Start a regular savings account on a monthly basis in any amount convenient to you. Your stock is guaranteed 100 per cent up to \$4,000 by United States Insurance.

PONTIAC presents A New Low Priced SIX and an Improved Low Priced EIGHT



Priced as low as \$615 \* and offering the following fine-car features . . . . .

- 1. Solid-Steel "Turret-Top" Bodies by Fisher
2. Hydraulic Brakes Triple-Sealed
3. Speedlined Styling
4. Silver-Alloy Bearings
5. 10 Second Starting at Zero
6. Completely Sealed Chassis
7. Enclosed \* Knee-Action Plus Balanced Weight
8. Fisher No Draft Ventilation
9. Luggage and Spare Tire Compartment
10. Double K-Y Frame
11. Smoothest Six and Eight-Cylinder Motors
12. Cross-Flow Radiator and Gusher Valve Cooling
13. Full-Pressure Metered Lubrication
14. Product of General Motors

\*On the Eight and De Luxe Six models.

When you visit the Pontiac salesroom today, you are going to see a type of beauty the like of which the motor car industry has never known before—new, refreshing, utterly different—the happiest interpretation of the streamline principle ever achieved... You are going to see for the first time that greatest of all Fisher achievements in coachwork—solid-steel "Turret-

Top" bodies... You will discover a new type of hydraulic brakes—smooth, positive and triple-sealed... new six and eight-cylinder engines featuring silver-alloy bearings and 10 second starting at zero... In brief, you are going to see the newest and finest products of a great modern plant—cars which embody scores of other quality features hitherto never combined at prices so low.

Pure Medicinal Norwegian Cod Liver Oil... 59c pint

White Pine Compound... 50c

FREDLUND DRUG CO. "SERVICE YOU WILL LIKE" 100 West Main Street Barrington, Ill.

NOW ON DISPLAY AT ROSHEER MOTOR SALES SCHOPPE BROS. SCHAUBLE BROS. SCHAUBLE'S GARAGE RAND ROAD GARAGE